



GE Golf League

Rules Voting Results





Topics

- Spring Training
- Voting Recap
- Rule Voting Results
- CONTRACT IS SIGNED, GREEN FEES ARE PAID

GE Golf League





Spring Training

Spring Training is **OPTIONAL**

The Acres

9941 Reading Road, Cincinnati, 45241

Tuesday, March 25 4:00 to 6:00 PM

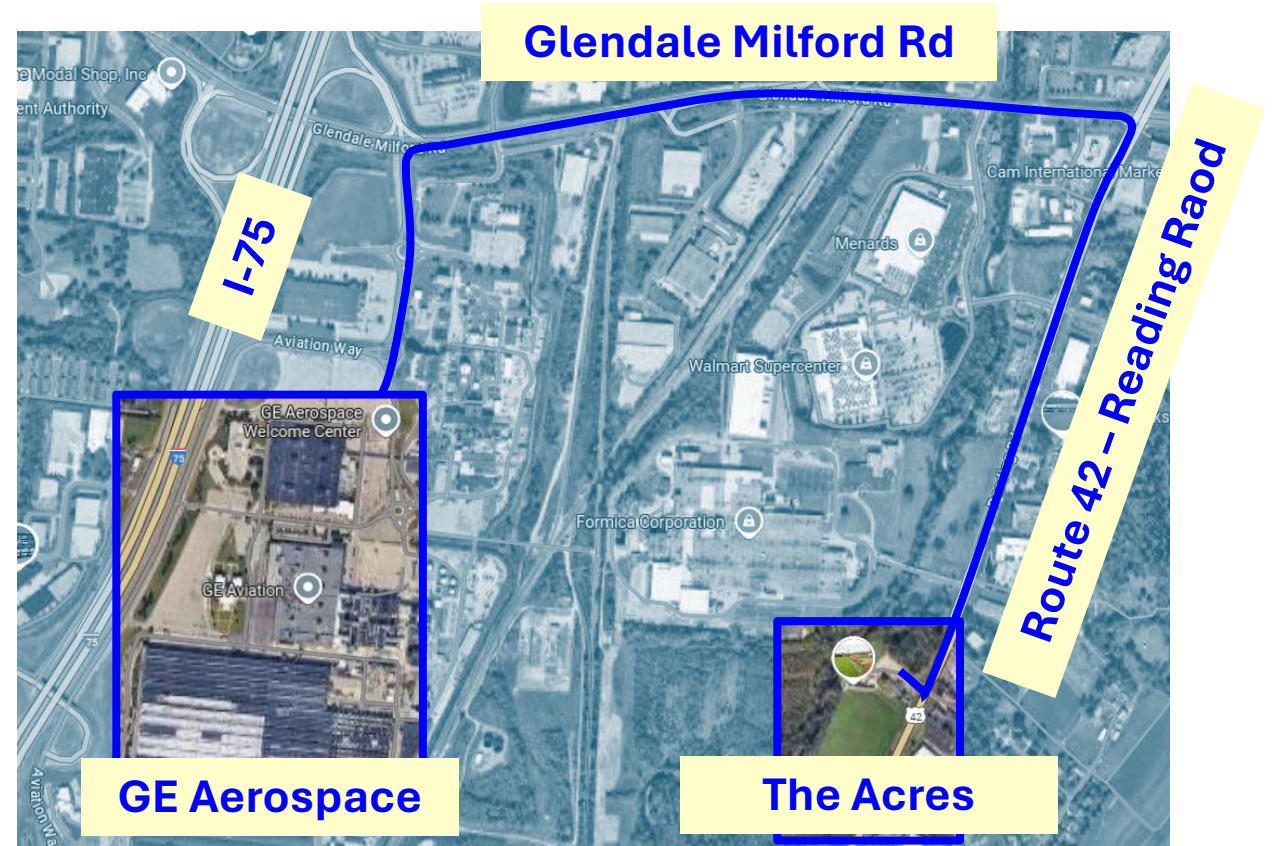
I will NOT be able to make it



You buy your own bucket.

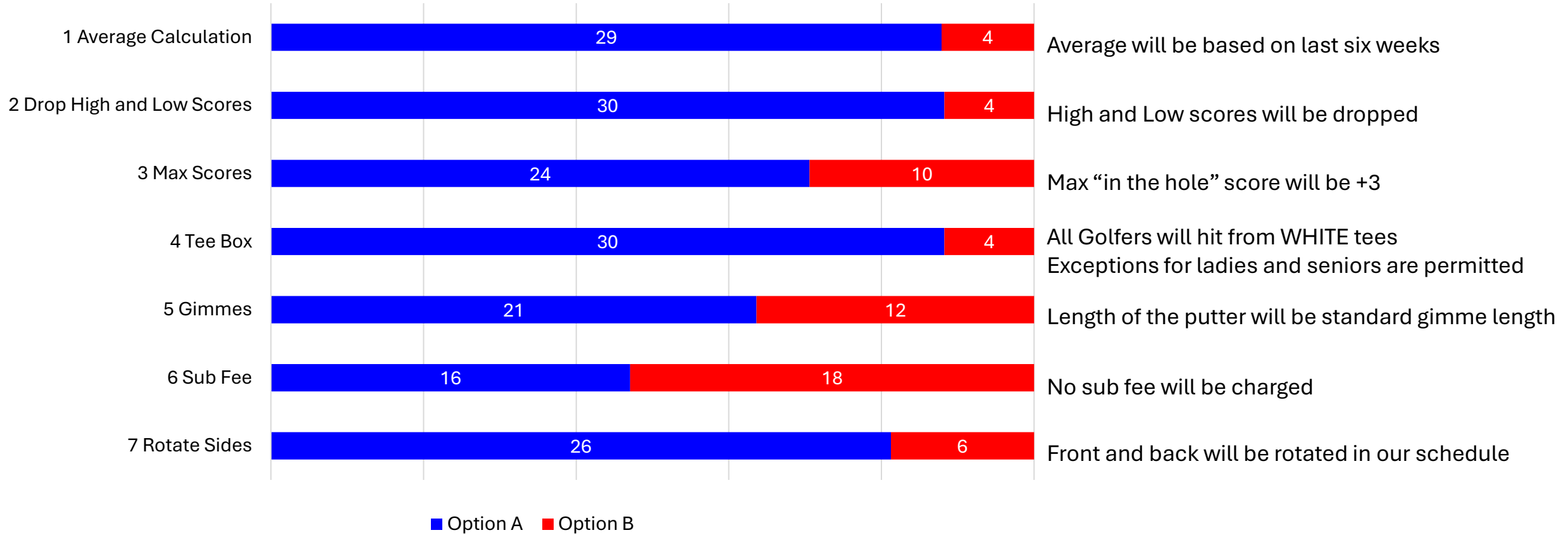
League does not have funds to provide.

GE Golf League





Voting Recap

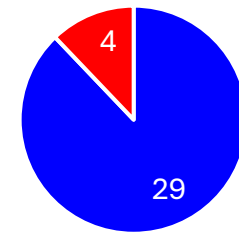




Rule Proposals

- **Issue 1 – Average Calculation**
 - **Option A – Use Last Six Rounds**
 - ~~Option B – Use Entire Season~~

Votes



■ A - Use Last Six Rounds ■ B - Use Entire Season

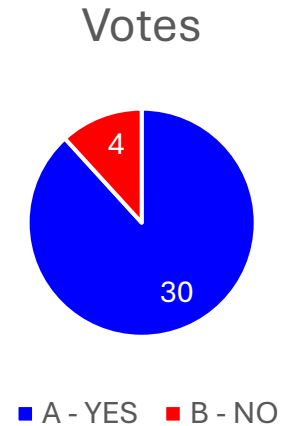
After a golfer has played six times, starting with the seventh rounds, the oldest round will be dropped from their average.

This will result in averages changing more often, and should be more reflective of how the golfer is currently playing.



Rule Proposals

- **Issue 2 – Drop High and Low Score in Average Calculation**
 - **Option A – YES**
 - ~~Option B – NO~~



High and low score will be dropped from a golfers average calculation.

Because we are only using the last six rounds, the high and low from the last six will be dropped, and the golfers average will be based on four scored rounds.

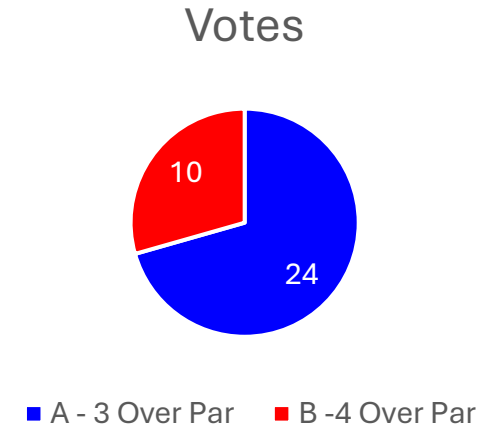


Rule Proposals

- **Issue 3 – Max Score On A Hole**

- **Option A – 3 over par**

- ~~Option B – 4 over par~~



The way this rule works is...

If your ball is NOT in the hole after your triple bogey stroke

6 on a par 3

7 on a par 4

8 on a par 5

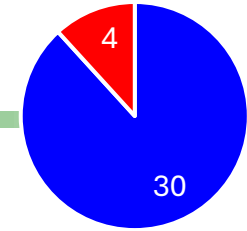
You pick up your ball and mark your score with an “X” or as a quadruple bogey

“X”s can earn points on a hole.



Rule Proposals

Votes



■ A - All from WHITE ■ B - Player Choice

- **Issue 4 – Tee Box**

- **Option A – All play from WHITE (ladies excluded)**

- ~~• Option B – Player Choice of GRAY, WHITE, BLUE, GREEN (but must be consistent)~~

All male golfers will play from the WHITE tees.

BLUE tees will not be used

Senior golfers have the right to play the GRAY tees. No pre-approval required.

Might ask you to move to WHITE if you average under 45 around Memorial Day

Female golfers have the right to play YELLOW tees. No pre-approval required.



Rule Proposals

- Issue 5 – Standardized Gimmes

- Option A – Length of standard-length putter

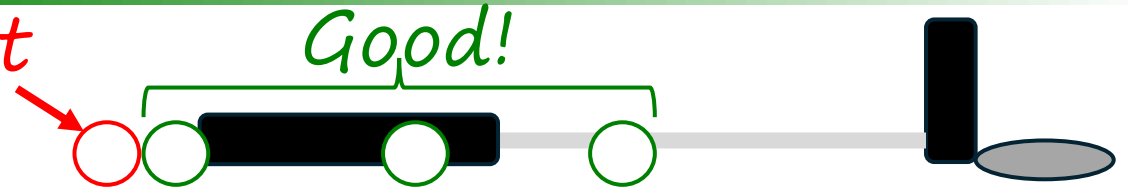
- ~~• Option B – Must be granted by opponent~~

Length of the golfer's putter will be used to measure gimmies
Golfer can take gimme on their own w/o opponent consent

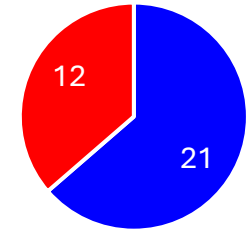
To measure, blade of putter should touch edge of hole. Ball must touch your putter
This is a very generous rule, please do not abuse. If questionable, please putt

Must putt it

Good!



Votes



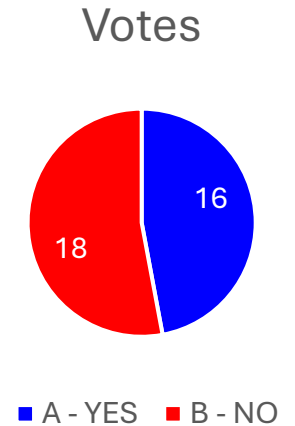
■ A - Standard Gimme ■ B - Opponent Grant



Rule Proposals

- **Issue 6 – \$5.00 Sub Fee**

- Option A – YES
- Option B – NO



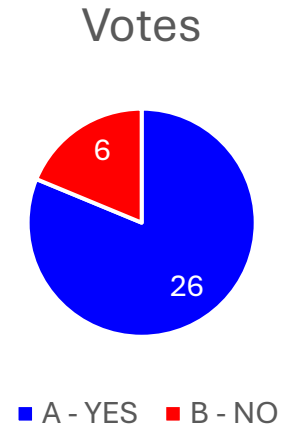
Subs will NOT be asked to pay \$5.00 to the league when they play
There will be no additional money for prizes or a party at the end of the season

Any reimbursement of green fees is strictly between the full time golfer and the sub
Your humble commish does not really want to get involved.
(I don't want to lose my ball in the woods either)



Rotate Sides Weekly

- Issue 7 – Rotate Sides Weekly
 - Option A – YES
 - ~~Option B – NO~~



We will rotate sides from week to week using our tee times on both sides
It will NOT be perfect. You will have weeks that you play the same side as previous week



Thank You, Thank You Very Much



GE Golf League